

FIRESIDE PLAZA

679-717 Route 23, Pompton Plains, NJ

FOR LEASE

1,400 - 20,710 SF



1,400 - 20,710 SF

 679-717 Route 23 • Pompton Plains, NJ

PROPERTY HIGHLIGHTS

Prime Route 23 Strip Center

- Available Immediately
- Newly Renovated Storefronts
- Vanilla Box Delivery
- Prime Retail Highway Corridor
- Densely Populated Marketplace & Trade Area
- Affluent Demographics
- Great for Restaurants, Medical, Retail Showrooms, Fitness, Recreation, and Spas/Med Spas
- Over 500' of Highway Frontage + New Pylon Signage
- Ample Parking + New Parking Lot (Coming Soon)

1,400 - 20,710 SF
FOR LEASE

OFFERING SUMMARY

Lease Price:	Call for Details
Available:	1,400-20,710 SF
Building Size:	29,800 SF

DEMOGRAPHICS

	1 Mile	3 Miles	5 Miles
Total Population	8,059	60,295	129,553
Median Age	42	45	44
Total Households	2,743	22,656	48,169
Average HH Income	\$184,435	\$181,850	\$180,931

EXCLUSIVELY OFFERED BY:

MARC PALESTINA

201.321.5776
marc@vanrockcre.com

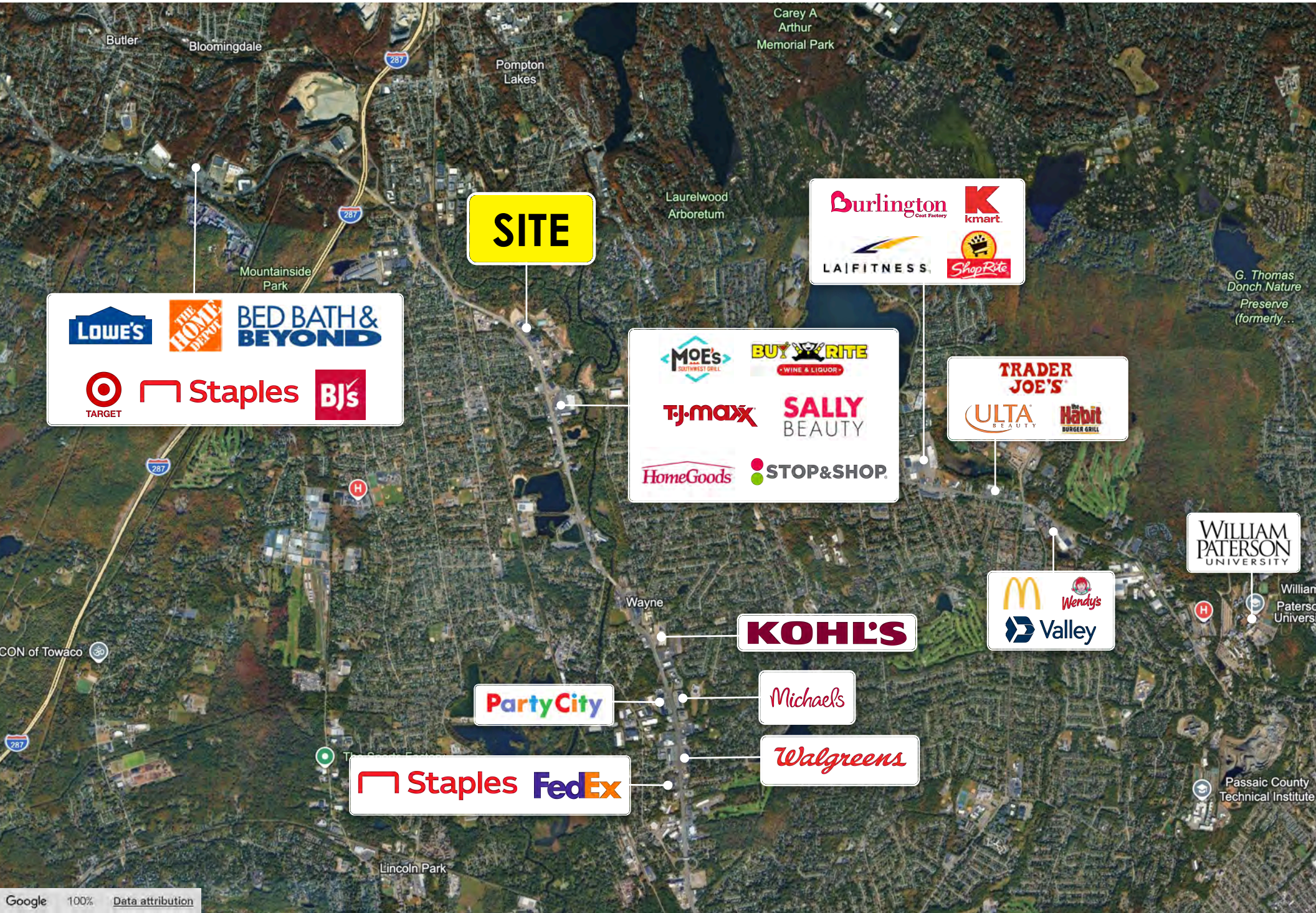
CJ HUTER

201.888.8129
cj@vanrockcre.com

LEW FINKELSTEIN

201.704.2743
lew@vanrockcre.com

VanRockCRE
COMMERCIAL REAL ESTATE



SITE

LOWE'S **THE HOME DEPOT** **BED BATH & BEYOND**
TARGET **Staples** **BJ's**

MOE'S **BUY RITE**
TJ-maxx **SALLY BEAUTY**
HomeGoods **STOP & SHOP**

Burlington Coat Factory **Kmart**
LA FITNESS **ShopRite**

TRADER JOE'S
ULTA BEAUTY **Habit BURGER GRILL**

KOHL'S

McDonald's **Wendy's**
Valley

Party City

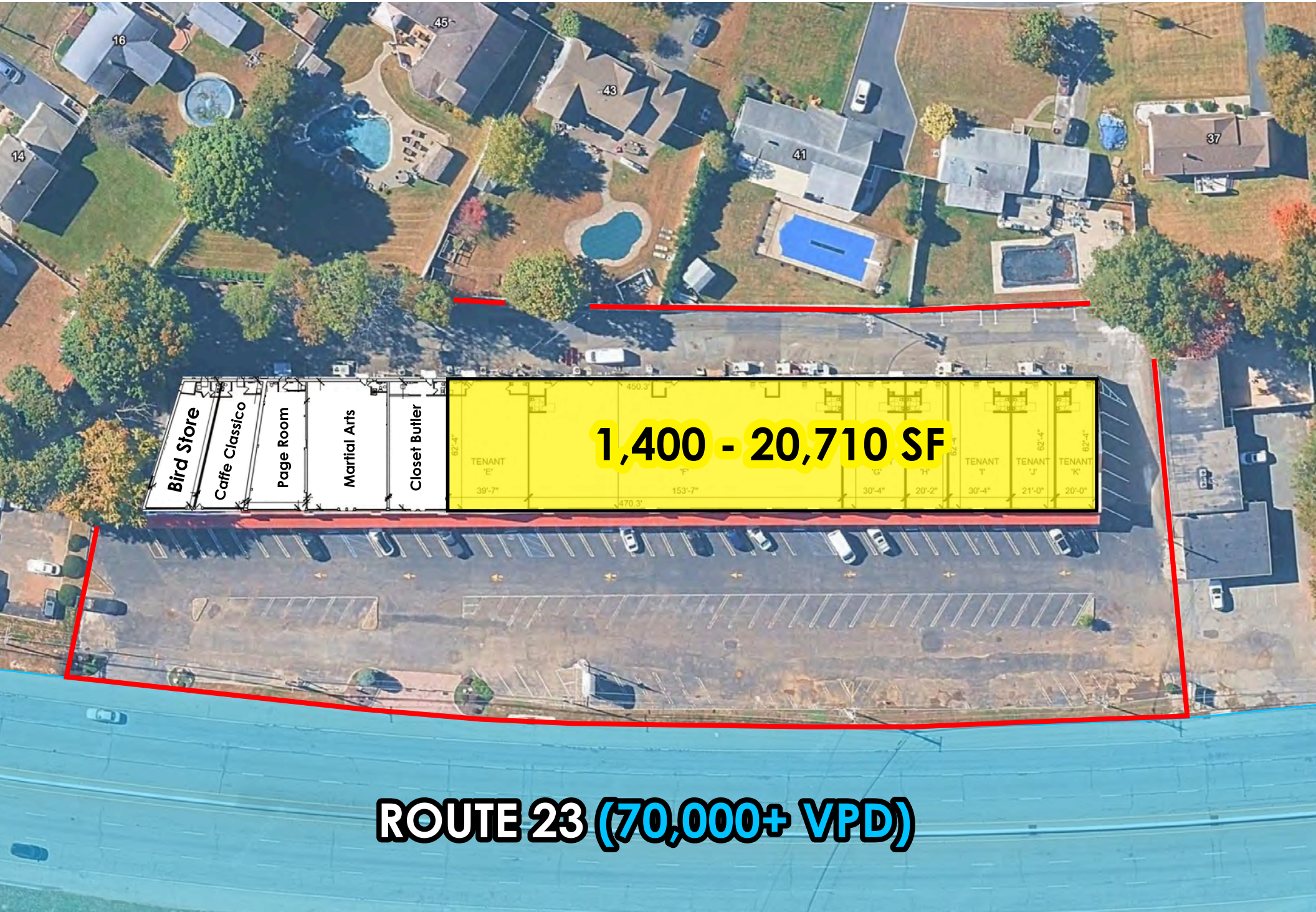
Michaels

Staples **FedEx**

Walgreens

WILLIAM PATERSON UNIVERSITY

Passaic County Technical Institute



Bird Store

Caffe Classico

Page Room

Marital Arts

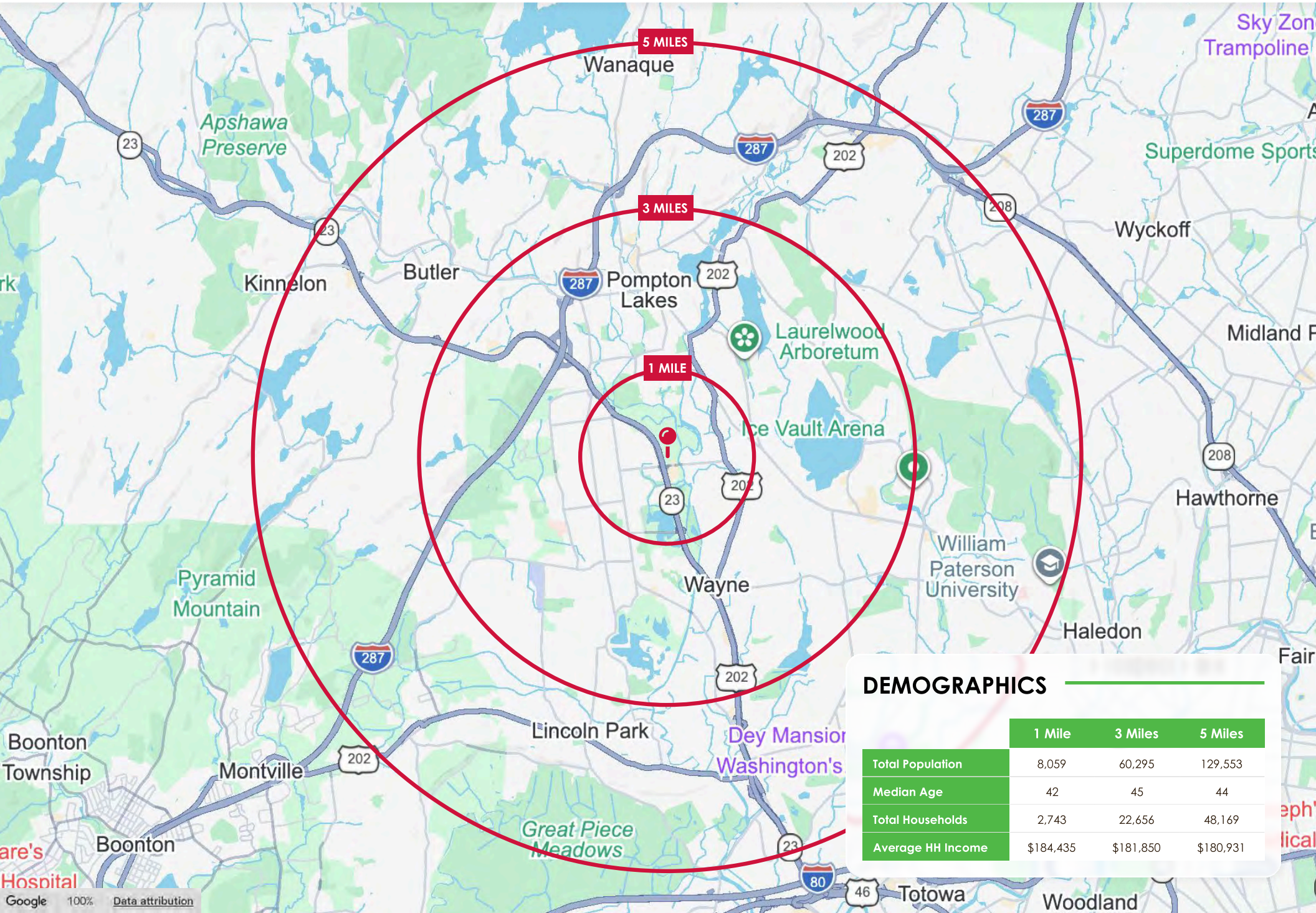
Closet Butler

1,400 - 20,710 SF

62'-4"	450.3'	62'-4"	62'-4"	62'-4"	62'-4"	
TENANT 'E'	F'	G'	H'	TENANT 'I'	TENANT 'J'	TENANT 'K'
39'-7"	153'-7"	30'-4"	20'-2"	30'-4"	21'-0"	20'-0"
470.3'						

ROUTE 23 (70,000+ VPD)

LOCATION MAP



DEMOGRAPHICS

	1 Mile	3 Miles	5 Miles
Total Population	8,059	60,295	129,553
Median Age	42	45	44
Total Households	2,743	22,656	48,169
Average HH Income	\$184,435	\$181,850	\$180,931



EXCLUSIVELY OFFERED BY:

VanRockCRE
COMMERCIAL REAL ESTATE

MARC PALESTINA

201.321.5776
marc@vanrockcre.com

CJ HUTER

201.888.8129
cj@vanrockcre.com

LEW FINKELSTEIN

201.704.2743
lew@vanrockcre.com

Disclaimer: The information contained in this marketing brochure has been obtained from sources believed to be reliable. However, no representation, guarantee, or warranty (express or implied) is made as to its accuracy, completeness, or suitability. Any projections, opinions, assumptions, or estimates used are for example only and do not represent the current or future performance of the property. All information is subject to change without notice, including price, terms, and availability. Interested parties are encouraged to conduct their own due diligence and verification of all facts.